

The Hao Family Tombs of the Tang Dynasty at Xiangyuan, Shanxi

School of Archaeology and Museumology, Shanxi University
and
Xiangyuan Museum of Antiquity

Keywords: Xiangyuan Tang Dynasty the Hao family ceramic figurine tomb tablet

In the fall of 2001, several Sui and Tang tombs were discovered at the construction site of the Xiangyuan 襄垣 County Coal Transportation Company, southwest of the Xiangyuan county seat. Archaeologists from the Xiangyuan County Museum learned the news and went to excavate the tombs. One of them was the tomb of Hao Zhe (AD 517–604) of the Sui Dynasty, and two others belonged to members of the same family who died during the Tang. Five tombs tablets that were discovered at the site indicate that the place was once a cemetery of the Hao family, a family of fairly high economic and social status. The Hao family cemetery was the first Tang family cemetery found in the area, and it has yielded some magnificent funerary figurines and grave goods. The various unearthed epitaphs revealed the names, official titles, and positions of sixteen members of the Hao family that cross nine generations and 189 years.

I. Tomb Structures

Two Hao family tombs were located near the Xinjian Xijie 新建西街 street southwest of the Xiangyuan County seat (catalogue numbers are 2001M32 and 2001M51). Both tombs were made of brick, with a single burial chamber. Based on the information recorded on the excavated tomb tablets, the occupants of the tombs were Hao Kuan 浩宽 (583–655) and his nephew Hao Qing 浩顷 (640–700).

1. Hao Kuan's tomb (M32)

Hao Kuan's tomb had a sloped passageway and a level corridor. The passageway was 7 m long and

1.1 m wide. At the north end of the ramp was the corridor. The corridor was faced with bricks and had an arched ceiling. It measured 1.05 m long, 0.9 m wide, and 1.3 m high. A brick wall sealed the corridor's opening. The nearly square brick tomb chamber was 3.05 m wide, 2.95 m long, and 1.3 m high. The dome-shaped ceiling was also faced with bricks. A brick coffin platform built around three walls of the burial chamber, was 0.4 m high (Fig. 1).

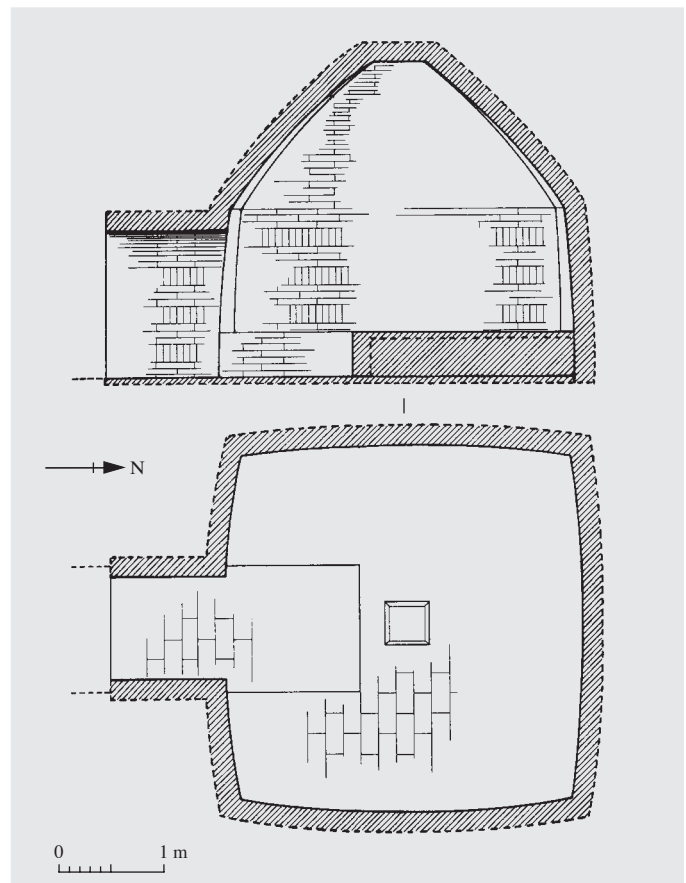


Fig. 1 Plan and cross-section of the tomb of Hao Kuan

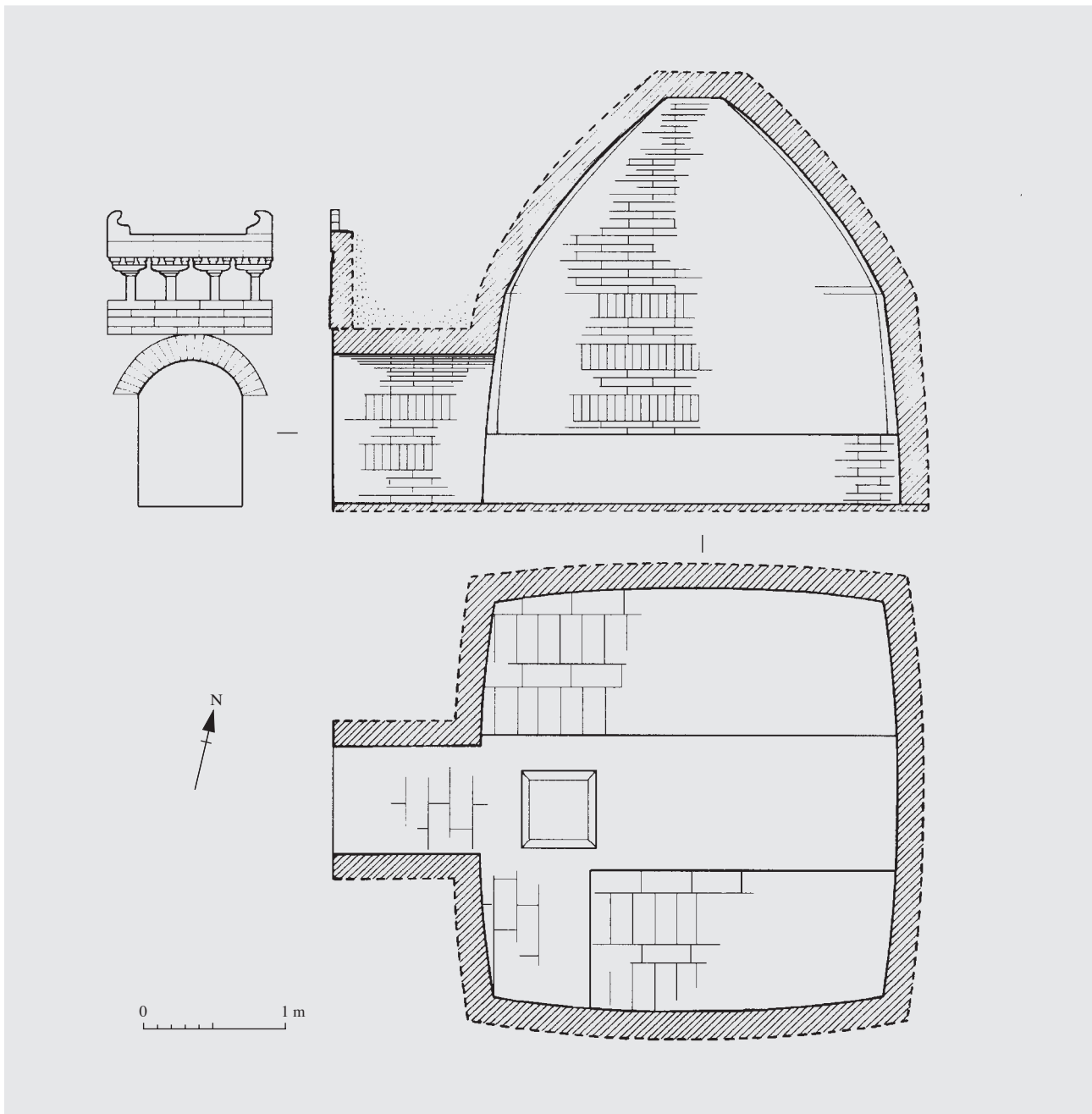


Fig. 2 Plan and cross-section of the tomb of Hao Qing

2. Hao Qing's tomb (M51)

Hao Qing's tomb was similar to that of Hao Kuan, but it had an imitation wooden doorway actually made of bricks above its tomb entrance. The tomb passageway was not excavated, thus the length is unknown. The width of the passageway near the corridor was 1.1 m. The corridor had an arched ceiling, and measured 1.1 m long, 0.75 m wide, and 1.03 m high. The brick structure above the tomb entrance was 1.16 m wide. The tomb chamber was square, with each side measuring 2.8 m. The burial chamber was faced with bricks laid in a pattern of three

horizontal lines to one vertical line. At about 1.5 m, the burial chamber arched into a dome. Along the western and eastern walls were two brick coffin platforms. The western one was 2.8 m long and 1.1 m wide, and the eastern one was 2.2 m long and 0.9 m wide. They were both 0.5 m high (Fig. 2).

II. Grave Goods

1. Hao Kuan's tomb. The twenty-one artifacts found in this tomb included six ceramic figurines, two stoneware jars with celadon glaze, twelve vessels, and an epitaph

stone.

There were two warriors (M32:1 and M32:2). The warriors wore helmets with shoulder length ear flaps folded up. Their shoulder guards stuck out. The round plaques of the chest armor were secured with cords. They wore pants, shin guards, and boots. They were 78 to 78.5 cm tall (Figs. 3 and 4).

There was one foreign groom (M32:4). Wearing a round-necked long-sleeved shirt under a short-sleeved coat, and shod in boots, the groom was depicted with a heavy curly beard and sunken eyes. He was 45 cm tall (Fig. 5).

There was one foreign male servant (M32:3). He wore his hair in two low buns (one on each side of his head). He wore a narrow-sleeved upper shirt with an upright collar, a belt, a small bag hanging on the belt in the back, and high boots. He was 45 cm tall (Fig. 6).

There were two tomb guardians (M32:5, M32:6). He had straight forelegs and kneeling hind legs; on its back were saw tooth-shaped spikes. It had a tail like a rabbit's and three toe-shaped craws. It was 66.5 cm high (Fig. 7). The other had pairs of hoofs for feet. On its back grew three-cornered spikes. Its tail was broken. It was 68 cm high (Fig. 8).

There was one epitaph stone. Its square-shaped cover-stone was 38 cm long on each side and 12 cm thick. It had an animal carved in high relief in the center. Along the two sides of the animal was carved the phrase "The Tomb Epitaph of the Former Lord Hao of the Tang." The epitaph stone was square in shape and similar in size to the cover-stone. It had 14 lines, and each line had 14 characters (M32:21) (Fig. 9).

2. Hao Qing's tomb. The thirty-three artifacts found in this tomb included twenty-three ceramic figurines, one stoneware jar with celadon glaze, eight vessels, and an epitaph stone.

There were two warriors (M51:1, M51:2). They wore helmets, armor with shoulder guards, and belts. The armor was painted white. Their pants were tucked into knee-high boots. They were 78 and 74.5 cm tall (Fig. 10).

There were six civil officials (M51:3–8). They wore head scarves, knee length robes with crew-necks and narrow sleeves, belts, and knee-high boots. They were 45 to 28 cm tall (Fig. 11).

There were seven figurines with "wind hats" (*fengmao* 风帽, hats with cowels) (M51:9–15). Underneath they wore crew-necked under shirts. They wore belts around their waists. Outside, they wore open-collared front-

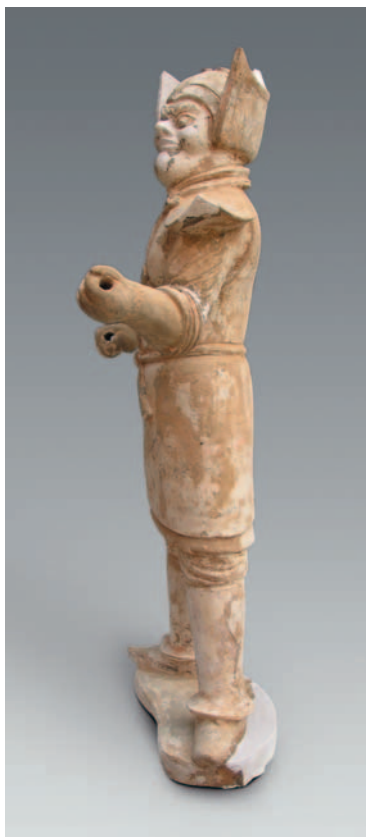


Fig. 3 Warrior (M32:1, left: reverse; middle: side)

Fig. 4 Warrior (M32:2)



Fig. 5 Foreign groom (M32:4)



Fig. 6 Foreign male servant (M32:3, middle: reverse; right: side)



Fig. 7 Tomb guardian (M32:5, left: reverse; middle: side)



Fig. 8 Tomb guardian (M32:6)

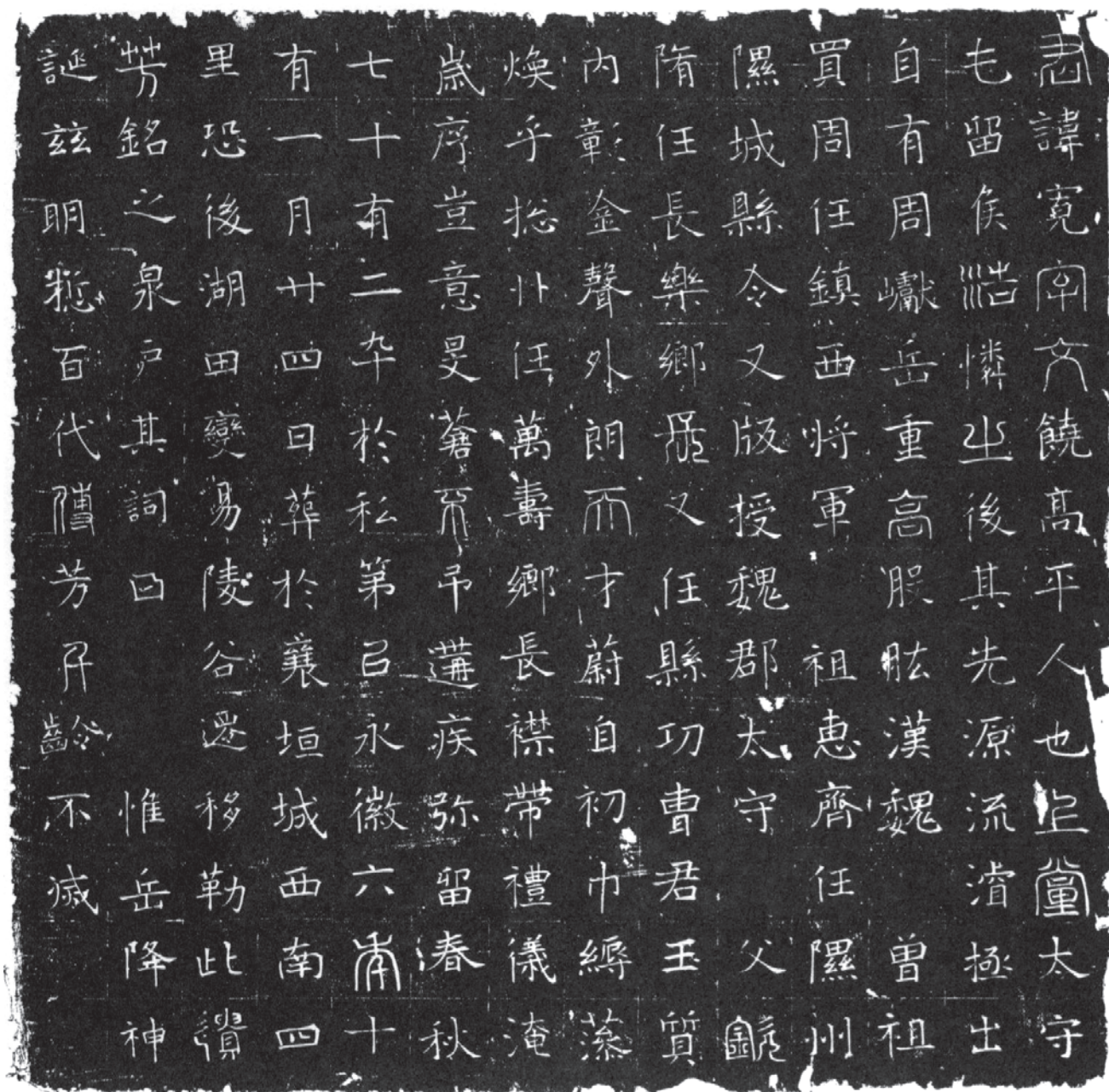


Fig. 9 Rubbing of the tomb epitaph of Hao Kuan

fastening garments and knee-high boots. They were 28 to 29 cm tall (Figs. 12 and 13).

There was a seated figurine (M51:16). He wore a pointed hat with a cowel, a long robe with wide sleeves, and trousers. It was 18.5 cm tall (Figs. 14).

There was a standing figurine (M51:17). Its hair was put up in a bun. The figurine wore a long robe with narrow-sleeves, trousers, and shoes with pointed toes (Fig. 15).

There were two tomb guardians (M51:18 and M51:19). Both had human faces and animal bodies. On their backs were saw-tooth spikes. They squatted with their

forelegs straight. They had hoofed feet. They were 46 to 48 cm tall (Fig. 16).

There was one horse (M51:20). This saddled standing horse was 55 cm long and 63 cm tall. Part of its tail was missing (Fig. 17).

There was an epitaph stone. It had no cover-stone. The epitaph stone was 54 cm long on each side and 11 cm thick. The epitaph had 17 lines and each line had 17 characters. It contained new characters created during Wu Zetian's 武则天 reign, including those for sun 日, moon 月, year 年, heaven 天, earth 地, human 人, and year of age 載 (Fig. 18).



Fig. 10 Warrior (M51:1)



Fig. 11 Official (M51:3)



Fig. 12 Figurine with "wind hat" (M51:10)



Fig. 13 Figurine with "wind hat" (M51:11)



Fig. 14 Kneeling figurine (M51:16)

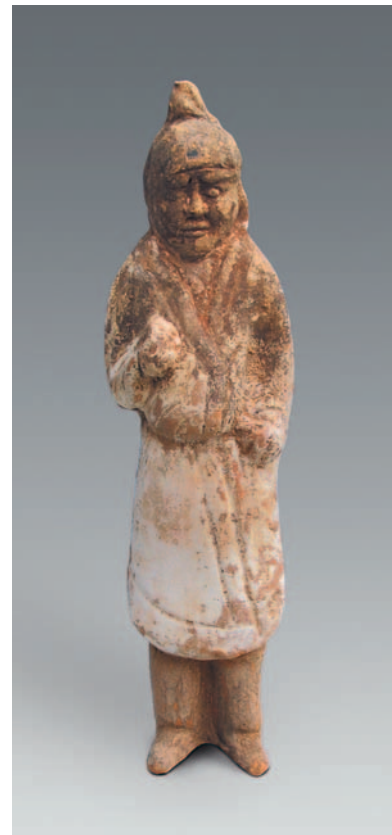


Fig. 15 Standing figurine (M51:17)



Fig. 16 Tomb guardian (M51:18)



Fig. 17 Horse (M51:20)

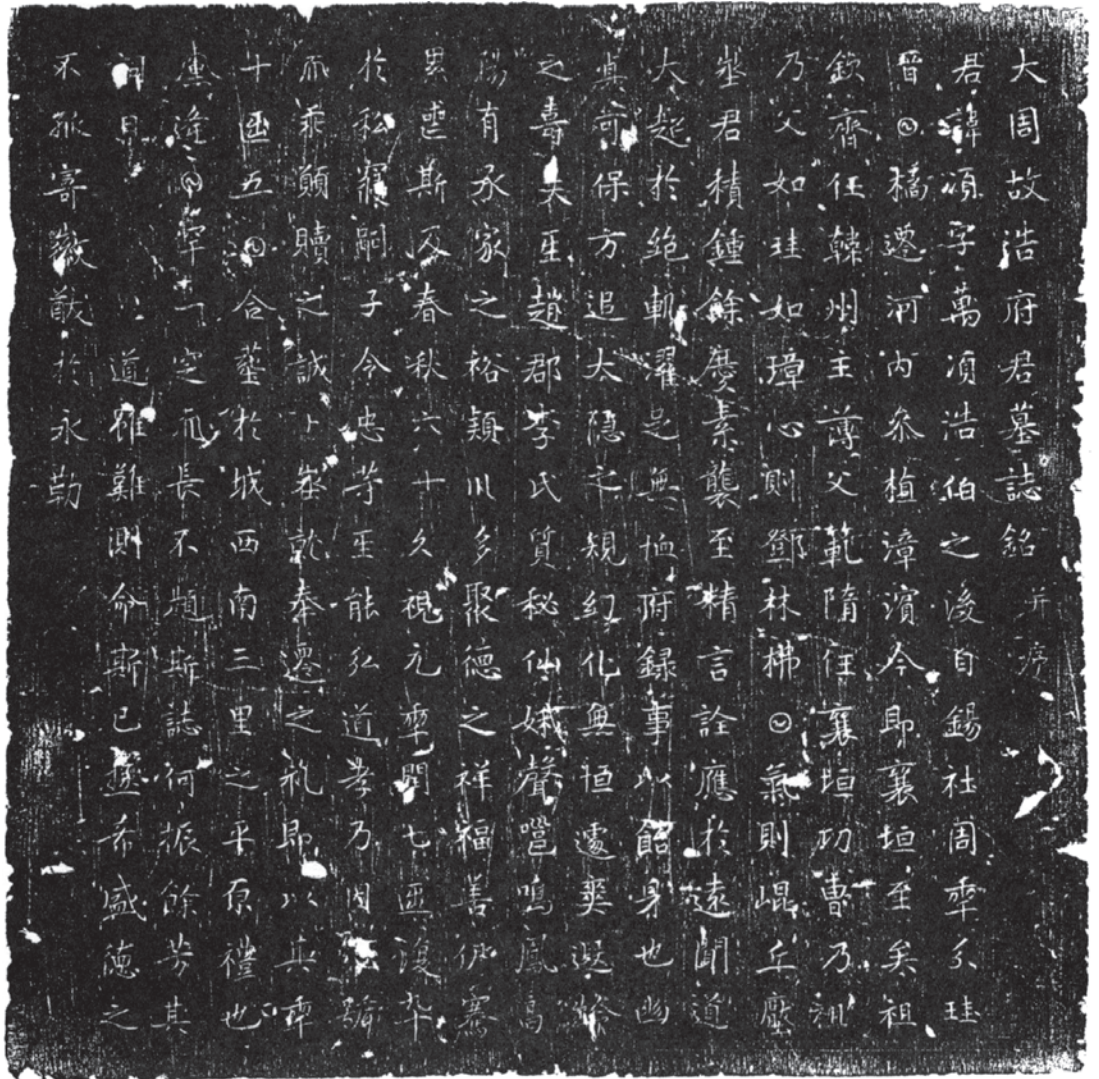


Fig. 18 Rubbing of the tomb epitaph of Hao Qing

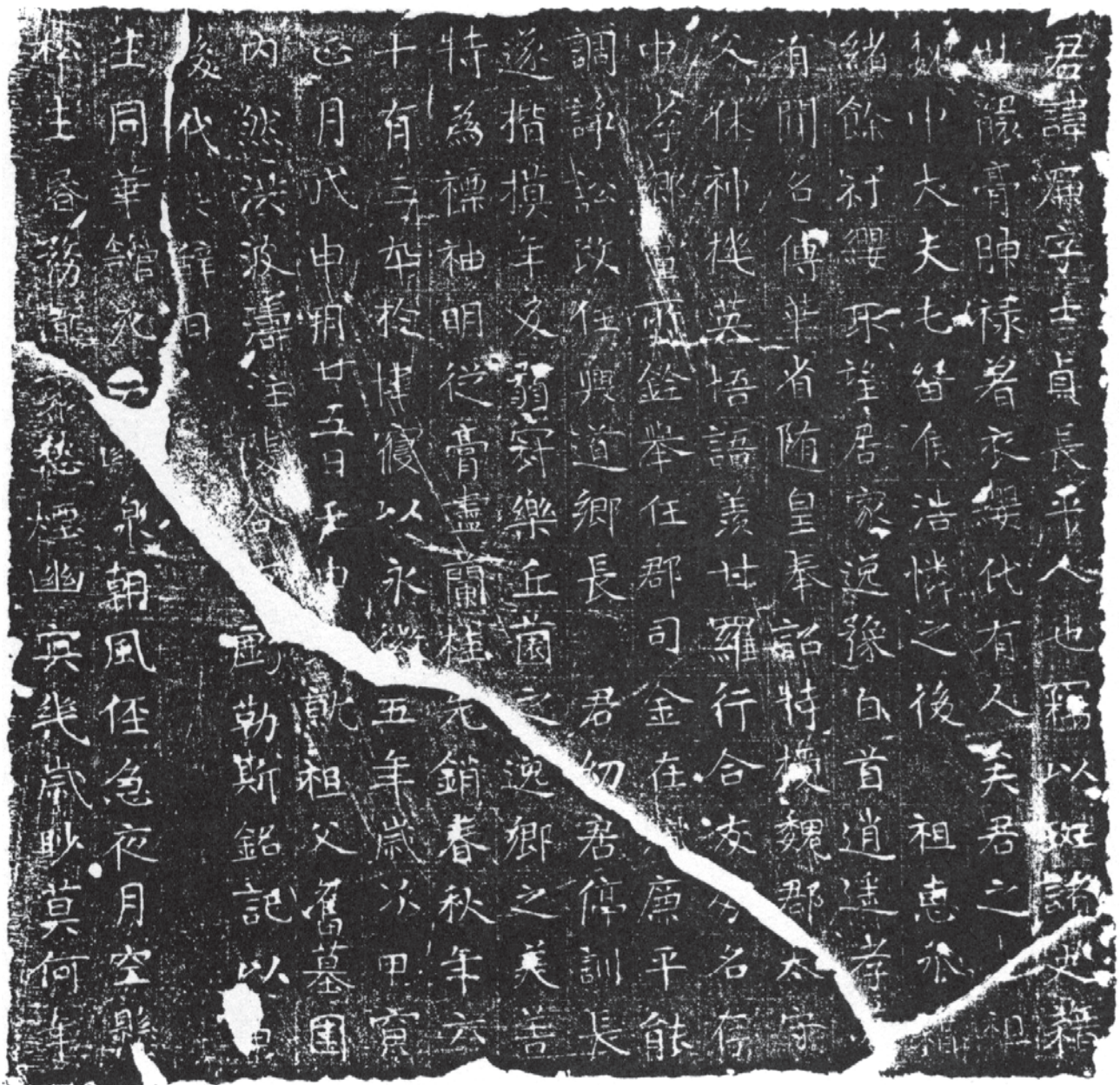


Fig. 19 Rubbing of the tomb epitaph of Hao Lian

III. Epitaph Stones of Hao Lian and Hao Yue

Two epitaph stones were later retrieved from local residents. Both of them were made of granite stone. The epitaph stone of Hao Lian 浩廉 (591–654) had no cover-stone, and the square epitaph stone was 37 cm long on each side and 9 cm thick. It was broken into 4 pieces (Fig. 19). Hao Yue's 浩约 (618–706) set included a cover-stone and an epitaph stone. The cover-stone was 58 cm long on each side and 15 cm thick. It was inscribed with four characters: "Lord Hao's tomb epitaph." Both epitaph stones had 16 lines and each line had 16 characters (Fig. 20).

IV. Conclusion

A total of five Tang tombs belonging to the Hao family in Xiangyuan were found. Epitaphs revealed the names of sixteen Hao family members from nine generations. The earliest known member of the Hao family was born in 517, the second year of the Xiping 熙平 reign period of the Northern Wei, and the latest one was born in 706, the second year of the Shenlong 神龙 reign of the Tang. The relationships of the known family members in this time span of 189 years were (Table 1):

Records of their hometowns in the five Hao family



Fig. 20 Rubbing of the tomb epitaph of Hao Yue

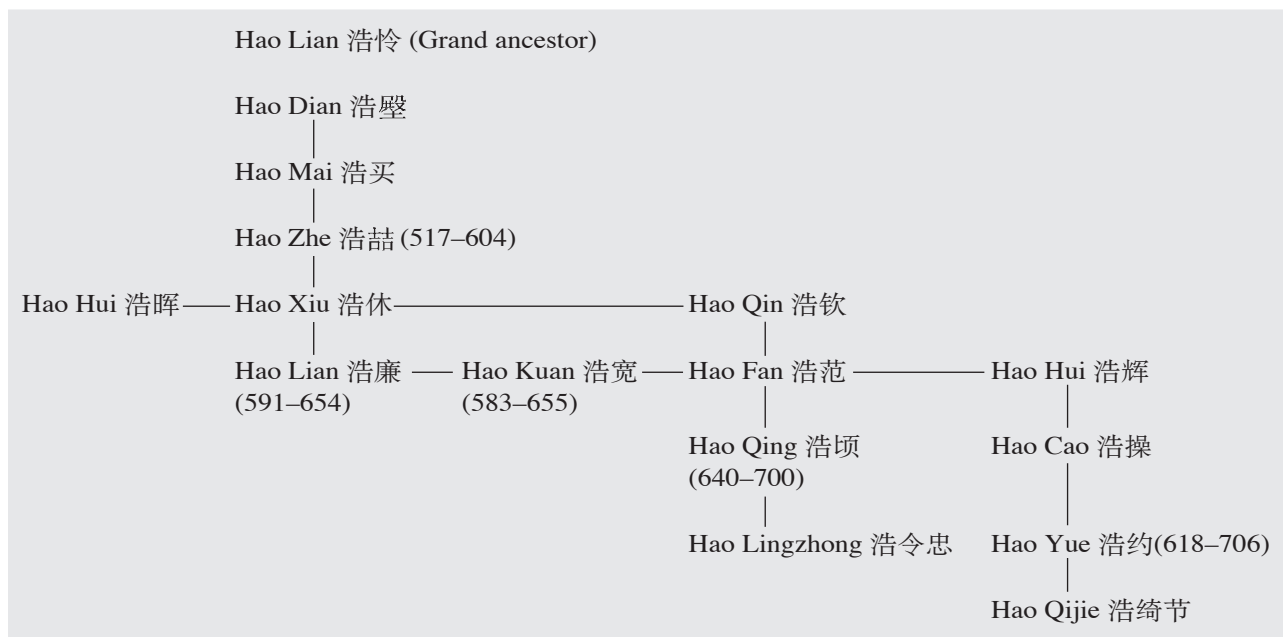
members' epitaphs were not consistent. Hao Zhe 喆 was "from Tunliu 屯留 of Shangdang 上党," Hao Lian was a "Changping 长平 native," Hao Kuan was a "Gaoping 高平 native," Hao Qing was from "Xiangyuan," and Hao Yue's "fief was in Tunliu [but] he lived in Xiangyuan." In the archaeological report on the "Tomb of Hao Zhe of the Sui Dynasty at Xiangyuan, Shanxi," Zhang Qingjie explained that during the Northern Qi, members of the Hao family moved to Xiangyuan from Tunliu, that Gaoping was where the family had originated, and that their enfeoffed estate (*shiji* 食邑) was in Tunliu. Hao Lian, the family's ancestor, was once "Master of Tunliu"

(*Tunliu hou* 屯留侯). Other than the epitaphs, no other written historical record mentioned members of the Hao family.

The peak of the Hao family's wealth and prestige occurred during the period from the early 5th to early 7th centuries. Several people (Hao Dian, Hao Mai and Hao Zhe) from the family "attained" official positions above the fourth rank. Regardless of differences in the epitaphs, Hao Xiu's official positions should be based on his son Hao Kuan's epitaph.

Based on Hao Zhe's epitaph, his courtesy name was Daohui 道惠. He was called "Ancestor Hui" (Zu Hui 祖

Table 1 The Hao family pedigree in the epitaph



惠) by his descendents of the Tang. It is likely that he used his courtesy name during his life, and was known by that name. Hao Zhe's epitaph mentioned that Daohui was once the Wucheng 仵城 county magistrate, but his grandson Hao Kuan's epitaph indicated that he was a Xicheng 隰城 county magistrate. During the northern dynasties, the administrative territory in this area was complicated. Counties might have several names. In fact, Wucheng and Xicheng were set up by successive administrations in the same territory. Thus, the administrative territory was the same even though the names were different.

The Hao family members held no official positions in the central government during the Tang. However, they were active in local affairs. For example, Hao Kuan and

Hao Xiu were heads of townships, and Hao Qing was a "prefectural secretary" (*fu lushi* 府录事). Others, such as Hao Lian enjoyed farming, and Hao Yue managed to get rich by doing business. By conclusion, this family was quite rich and had influence over local affairs. Information from the Hao family epitaphs is important to study Tang social history.

Reference

1. Shanxi Sheng Kaogu Yanjiusuo 山西省考古研究所 and Xiangyuan Xian Wenwu Bowuguan 襄垣县文物博物馆 (2004). "Shanxi Xiangyuan Suidai Hao Zhe Mu 山西襄垣隋代浩喆墓" (Tomb of Hao Zhe of the Sui Dynasty at Xiangyuan, Shanxi). *Wenwu* 文物 2004.10: 4-17.

Note: The original report, published in *Wenwu* 2004.10: 18-35, with 37 photographs and 1 table, is written by Lang Baoli 郎保利 and Liu Yaozhong 刘耀中. The summary is prepared by the original authors and English-translated by Suzanne Cahill and Ye Wa 叶娃.